



Flat - Ground Floor (EPC Rating: C)

**33 ALNWICK ROAD, SOUTH SHIELDS, NE34  
0LB**  
Per Month

**£595 Per**

**TLG** | The Letting Group  
Lettings | Management | Repossession



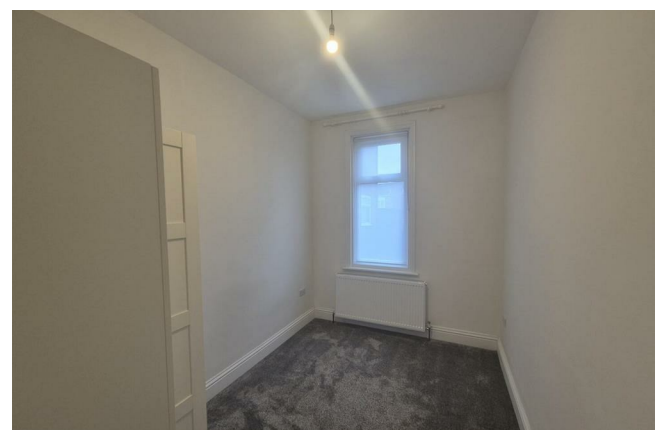
# 2 Bedroom Flat - Ground Floor located in South Shields

Beautifully presented two bedroom ground floor flat which has recently undergone a full refurbishment.

The property is located close to local shops, schools and transport links.

The property comprises: Lounge with fireplace, newly fitted kitchen, two good sized bedrooms, bathroom with over bath shower.

Internal Viewing is highly recommended.

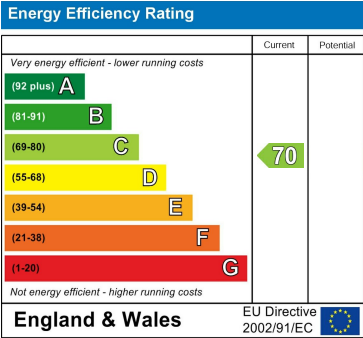


SOUTH SHIELDS | 40 DEAN ROAD, SOUTH SHIELDS, TYNE & WEAR, NE33 4DZ

Council Tax Band

A

Energy Performance Graph



Call us on  
**0191 497 5333**  
[stephanie.lunn@thelettinggroup.com](mailto:stephanie.lunn@thelettinggroup.com)

Agents Note: Whilst every care has been taken to prepare these particulars, they are for guidance purposes only. All measurements are approximate and are for general guidance purposes only and whilst every care has been taken to ensure their accuracy, they should not be relied upon and potential buyers are advised to recheck the measurements.